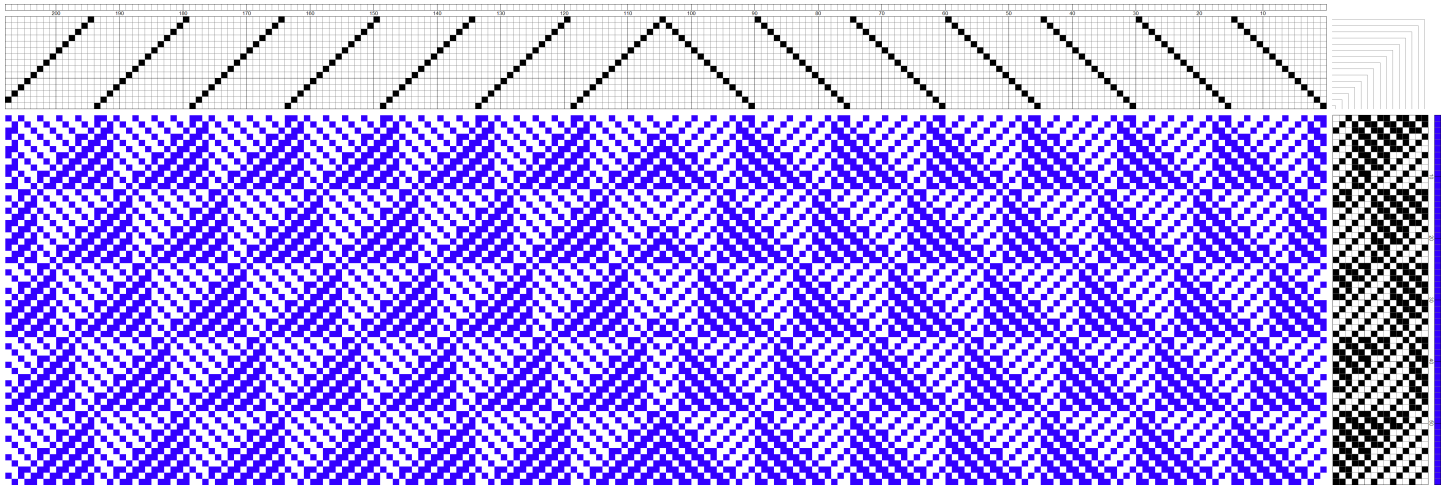


September Sample by Edna Devai



Warp Description

Warp Yarn: Cottolin 60/40

Count: 22/2

Sett: 24 epi

Weft Description

Weft Yarn: same as warp, different colors

Picks per inch: 18 ppi

Take up and Shrinkage

Warp: 15%

Weft: 11%



The design originated as my contribution to the Color and Design Study Group's Geometrical Shapes project for 2008-2009.

In looking for triangles, I found a nice set in Jacob Angstadt Designs, page 67. That provided me with a good starting point to play "blow up and twirl around" with them until I found a pleasing and sensible arrangement. The originals can be woven on 5 shafts + tabby with a direct tie up.

I decided to weave towels with this design first of all because that is a good way to try out new designs. Since I felt pressed for time with graduations and weddings coming up, it was important to use my loom efficiently and use the design and the warp for as many purposes as possible. Two graduations, two weddings and two sample projects have been satisfied.

By the time I wove off the first warp, I liked the project so much that decided to tie on a new warp. I tied it on behind the heddles as described by Peggy Ostercamp: New Guide to Weaving No. 2, pp. 99.