

# PPWG NEWSLETTER



Pikes Peak Weavers Guild  
PO Box 8104, Colorado Spring, CO 80933-8104  
[www.pikespeakweavers.org](http://www.pikespeakweavers.org) [PPWGuild@aol.com](mailto:PPWGuild@aol.com)

## INSIDE THIS ISSUE

Notes From Your President	7
Guild Members in the News	1
Sept Program	2
September Weaving Sample	2
September Spinning Sample	3
2007 Challenge	5
Library Update	5
Shimmering Colors	5
Minutes	8
Program Schedule	9
Classifieds	9

## December 15<sup>th</sup> Deadline

By Susan Bowman & Beverly Weaver

### Living with Beauty: Handwoven Textiles for the Home

Don't miss the December 15, 2007 postmark entry deadline for this international juried exhibit of handwoven textiles for the home. Jointly sponsored by the Pikes Peak Weavers Guild and the Business of Art Center (BAC) in Manitou Springs, the exhibit will be hung in the BAC's Hagnauer Gallery between June 13 and July 26, 2008.

Entries must be handwoven, for use in the home interior, be an original design, and be finished objects (not yardage). Traditional and non-traditional fibers, structures, and designs may be used to weave both decorative and utilitarian textiles, including but not limited to wall pieces, rugs, table linens, towels, and baskets.

The juror, Betsy Blumenthal, is a textile artist who has been exploring the intersection of weaving and dyeing for over 30 years. She holds an MFA in Textiles from Indiana University and co-authored Hands on Dyeing. Betsy was an Adjunct Professor in the School of Fine Arts at Indiana University and has taught many workshops at conferences and elsewhere across the United States. In addition to her wall pieces she weaves textiles for the home and unique wearable art pieces.

At the juror's discretion, award presentations include:

\$4000 in total cash awards for Best in Show, 1st, 2nd, 3rd Place from Pikes Peak Weavers Guild

American Tapestry Alliance Award for Excellence in Tapestry

Complex Weavers Award

Handweavers Guild of America Award

Handwoven magazine's Weaving for the Home Award and \$100 cash

Surface Design Association Award of Excellence

A prospectus may be downloaded from [www.pikespeakweavers.org](http://www.pikespeakweavers.org) or received via email by contacting Susan Bowman or Beverly Weaver at [LivingwithBeauty@aol.com](mailto:LivingwithBeauty@aol.com).

Written requests may be made to Susan Bowman or Beverly Weaver c/o Pikes Peak Weavers Guild, P.O. Box 8104, Colorado Springs, CO 80933.

## Guild Members in the News

Guild member, Beverly Weaver is quoted in the Independent about her handwoven carpet bags that are in the Road Tested exhibit at the BAC. [Read the article here](#), if you are reading our newsletter on the web. If you are reading via our printed version, you will find the article at the following URL:

<http://www.csindy.com/csindy/2007-08-02/sevendays3.html>

## September Program

By Edna Devai-Alth

### Navajo Weaving Presenter: Bonnie Julsen

Bonnie Julsen was inspired by a Navajo rug that has taken her on a journey of spinning, weaving, exhibiting and teaching.

In her program entitled "Navajo Weaving" Bonnie plans to present the following:

Navajo weavings in historical context from 1850 to the present; weaving techniques used by the Navajo, showing examples of such; trading post designs, including physical examples of many; a display of her scrapbooks showing her experiences with her Navajo friends at Canyon De Chelly National Monument,

*Have an interesting article  
for our October  
Newsletter?*

*Send an electronic copy to:  
[PPWGuild@aol.com](mailto:PPWGuild@aol.com)  
By 20 September 2007*

Chinle, Arizona; and examples of the Navajo-style weavings she has done.

Bonnie will also be demonstrating Navajo-style weaving on at least one Navajo loom.

**Date: September 14, 2007**

**Time: 11:00 a.m.** immediately following the PPWG business meeting

## September Weaving Sample

By Doreen McLaughlin

I rescued my 60-inch AVL 24-shaft loom from a flooded basement near St. Louis. I had to bleach and sand all of the bottom pieces, including the treadles, to get the mold off.

For the first project on the loom, I chose two patterns to sample. This one is called Donat's Diamonds and was in the Complex Weaver's 24 More or Less study group samples a few years ago. The yarn is 14/2 cotton from my stash.

I have learned a lot while weaving this sample:

- The harnesses should be straight. If not, they will catch on each other, especially if they are

so bent as to resemble a corkscrew.

- The CompuDobby should fit snugly in the doobby box. If it does not, then some shafts will not raise when they should. Of course, this mispatterning will only be visible on the underside of the weaving. Those free credit cards you get in the mail make excellent shims.
- The cloth storage spring-in-the-drum system works if you buy the loom new from AVL. After that, if tension is lost, for example when the cable has rotted away in a flooded basement, the chances of getting the system to work again are slim. Two solid weeks of working on it from Christmas

*Cont. Weaving Sample on page 5*



*Woven by Doreen McLaughlin*

### SPRING WORKSHOP NEWS

WW will be providing  
more information  
at the September  
Guild meeting

## Intriguing Web

The INTRIGUING WEB show deadline is fast approaching. I hope that you are all weaving, spinning..... diligently.

Remember that if you have any questions, you can contact:

Dottie: 444.8602 or 649-7673 (cell)

Beth: 576-3548

Maryse: 594-6824 or [maryse-dl@comcast.net](mailto:maryse-dl@comcast.net).

You are welcome as well to come and get the inventory form and the labels at Maryse's house at: 5750 Harbor Pines Point. Her house is located in the complex near the entrance to the Flying W Ranch.

The forms are available on the guild web site as well. The show deadline is **September 14th**, guild meeting day. Your work will be accepted before and after the guild meeting. As a last resort, you work can be delivered to Maryse's house on September 17th. Please call first. Work will not be accepted after this date.

Remember to bring with you 3 completed inventory forms, a W9 form, the signed waiver, and your work

## September Spinning Sample

*By Edna Devai*

This spinning sample was made at a workshop I took with Deb Menz.

Her color blending techniques interested me because commercially dyed fiber can be used for it. One can play with color without all the mess, heat, etc., involved in dyeing.

We used drum carders, combs and hackle to prepare our blends. The sample was made using 12 colors. The knitted square shows how all those barber poles work together.

For more information refer to her book: *Color in Spinning*. Green Valley has several copies.

### PPWG Library Update

*Beverly Weaver*

Many thanks to Jan Sinn for donating "More Than Four" by Mary Elizabeth Laughlin plus many guild newsletters and magazines to the library.

labeled with the Guild tag and a Common Wheel yellow sticker.

Keep up the good work and let's make our guild proud!

Maryse, Beth and Dottie



## Challenge for 2007 –

Something for the Table or a Towel

*Heather Hubbard*

Bring your Challenge items for exchange to the September meeting.

With all the other things going on in the Guild this year you remember the challenge don't you? The Challenge for 2007 is something for the table of a towel. If you are weaving place mats or napkins then submit a pair (2).

Items will be exchanged by random drawing at the September meeting.

## Fabulous Fiber II Featuring Handpainted Warps, Skeins, Roving, and Rags

DATE: October 20, 2007  
 TIME: 3:00 TO 7:00 pm PM  
 LOCATION: Judi Arndt's  
 REFRESHMENTS: Food, Beer, Wine, and Soft Drink

SILENT AUCTION: Ribari Hand Embroidered Textiles These are donated items

TICKETS: \$10 in advance, \$15.00 at door  
 Will be available at Sept. meeting (Susan should still have tickets available to be printed from last show)

Focus will be on yarn and some scarves (from last event). If any one is interested in donating other yarns for a WHITE ELEPHANT table they will be accepted gladly.

For more information and directions contact:

[judiarndt@msn.com](mailto:judiarndt@msn.com)



2115 W. Colorado Avenue • Colorado Springs, CO 80904  
 719.448.9963 • 800.457.8559

Visit our website for information on our study groups and classes.

Weaving  
 Knitting  
 Spinning  
 Dyeing  
 Crochet

Books  
 Dyes  
 Fiber  
 Knitting Needles  
 Looms  
 Spinning Wheels  
 Yarns

Open Mon - Sat

[info@greenvalleyweavers.com](mailto:info@greenvalleyweavers.com) • [www.greenvalleyweavers.com](http://www.greenvalleyweavers.com)

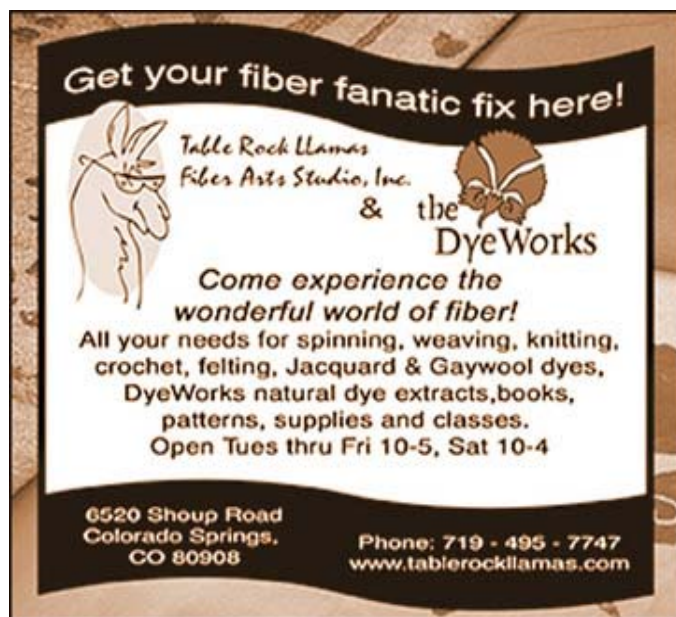
## SHIMMERING COLORS: THE MAGIC OF IRIDESCENCE

**October 13, 2007**--Saturday Workshop with Bobbie Irwin. 8 a.m. -- 5 p.m. at the Penrose House

Please note that the final \$30 of the workshop fee is due by the September 14, 2007 PPWG meeting.

Panera Bread will be providing lunch that day, and you can select from their menu at the meeting. Bobbie Irwin will be sending the yarns to be used for the warps at the workshop, and I will be distributing them to registrants early in September.

Carol Wilkinson  
 719-576-4530  
[LCWILKIN@MSN.COM](mailto:LCWILKIN@MSN.COM)



## Rocky Mountain Weavers Guild Annual Fiber Art Sale

All fiber artists are invited to participate in the Rocky Mountain Weavers Guild Annual Fiber Art Sale.

You must be a member of RMWG by October 1 to be in this year's sale. The details about joining RMWG and participating in our Annual Sale are on the website: [www.rmweaversguild.org](http://www.rmweaversguild.org) or contact:

Shelly DeChantal: 303-759-9505 or [krantzdech@earthlink.net](mailto:krantzdech@earthlink.net).

**Sale Dates:** October 25-27.

Englewood Civic Center, 1000 Englewood Pkwy, Englewood, CO. Hours: Thurs. 5-8p, Fri. 10-8p, Sat. 10-5p. Map: [www.rmweaversguild.org](http://www.rmweaversguild.org).

### *Weaving Sample* from page 2

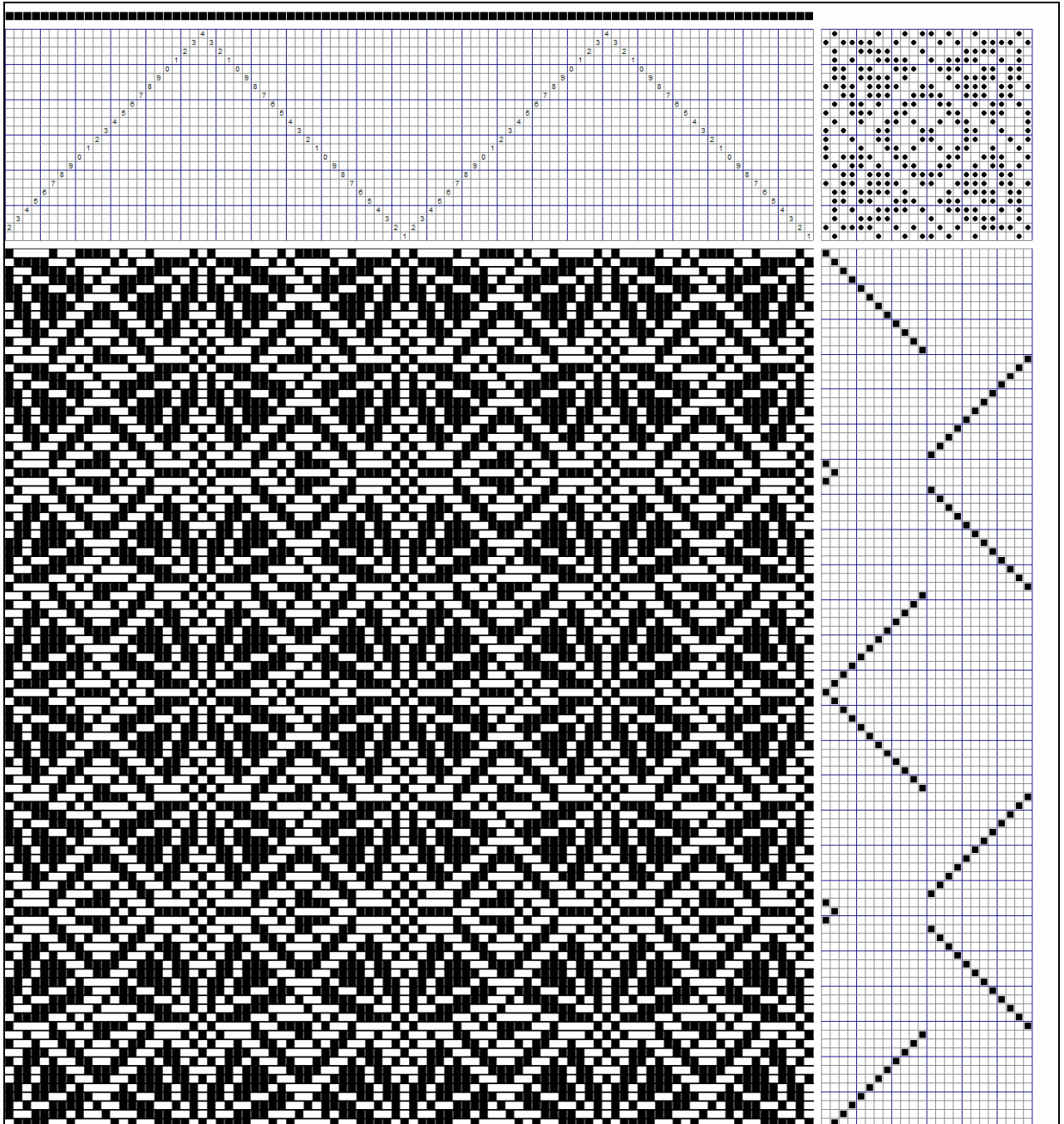
to New Years proved that the spring is immune to swearing. The new "old-fashioned" cloth storage system retrofit was interesting to do. The cloth storage system now works; however, improving the cloth uptake tension is on my "to do" list.

- No matter how big the cone of warp yarn is, do the math before warping.
- If possible, start warping on in the center of the sectional beam. That way, if you run out of yarn (see above), you will simply have a smaller piece rather than a hole in the middle of the warp.
- Using weft yarn in the center of the warp (see above) makes your weaving look skunky.
- Pay attention while using the AVL Warping Wheel. Otherwise, you will have some ends that are 6 yards long and others that are 9 yards long. The 6-yard ends make an interesting snapping noise while warping on.
- Medicine bottles hung off the back of the loom to tension the extra 3 yards added (knotted) to the 6-yard ends (see above) are cat magnets.
- The warp goes over, rather than under, the back bar. Since the back bar is permanently mounted in the frame, if you do go under it, and realize your mistake about half way through slewing the heddles, you have to rewind the warp onto the warp beam and reroute the warp over the bar while maintaining the weaver's cross. While swearing does not help this process, alcohol seems to.
- After tying on to the cloth apron, and weaving the header, do not assume that the fell is parallel to the breast beam. Do not discover that the fell is at angle to the breast beam during a telephone conversation with your sister who hates swearing.
- The flyshuttle sometimes diveXrges from the race and goes sailing off into the studio. If I position my elbow just right, it deflects the flyshuttle back into its garage.
- No matter how big the cone of weft yarn is, do the math before weaving, especially if you've had to use some of it for warp. Luckily, I have a little more yarn in the stash.
- The Case of the Bobbins on the Floor. If you stop weaving to wind bobbins, the CompuDobby goes "to sleep," and when you wake it up sometimes it get grumpy and forgets what the next pick should be. So, I wind bobbins in advance and put them on the shuttle tray. I kept finding bobbins on the floor in the morning. The mystery was solved when I found a hairball on the shuttle tray. The cats are invoking their right to remain silent.

Finally, do not volunteer to be the September weaving sample provider on the premise that there will be plenty of evenings to weave during the summer because we're in a drought.

### Donat's Diamonds

Source: Complex Weaver's 24 More or Less study group samples





## Notes from Your President

*By: Linda Shaffer*

Early in the summer, Becky Chapin and I were discussing our previous guild jobs. We talked about how much we had learned by becoming involved with the guild and what we had learned from "stretching" to do our jobs. I began to think of this summer as one of stretching and growing.

I attended the opening of the Rio Grande Textile exhibit at the Pioneers Museum. Lisa and Irvin Trujillo were speaking at the opening. I became very interested in their work and their rich family weaving tradition. In early June, I visited their shop/studio, Centinela Traditional Arts, in Chimayo, New Mexico. While there, I was pleased to purchase the first weaving of 11 year old Angelica Montoya who is continuing in the tradition of her weaving family.

I attended the Midwest Weavers Conference in Blair, Nebraska and the Intermountain Weavers Conference in Durango Colorado. I came away from these conferences with an increased knowledge about weaving, weavers, and fiber.

I also came back from Durango with a new Glimakra loom which I am assembling so I can finish my projects for our show at Common Wheel and then I'll be weaving pine trees for the Coverlet Exhibit.

The most important thing I learned at the conferences is what a great group of weaver's we have in our guild. We are so fortunate to have such a wealth of knowledge and experience in our own guild. Everyone is willing to share their knowledge, all we have to do is ask. We are truly a professional group and our events reflect this.

Welcome to our new guild year! I hope all of you had a productive summer of weaving, stretching, and making new weaving friends. I am looking forward to seeing everyone at the September meeting with your pieces for the Common Wheel show and your pieces for our Weaving Challenge. We have many exciting programs and events planned for this year. If you aren't involved in any of these already, perhaps you can find something of interest to you and volunteer to help in some way. It is our participation that makes this guild a viable group for everyone.

## Minutes of the PPWG Board Meeting, August 8, 2007

President Linda Shaffer called the meeting to order at 12:30 pm. Present were Edna Devai-Alth, Barb Byerly, Bev Weaver, Jan Sinn, Catie Kiley, Debbi Holdeman, Louise Conner, Karen Currier, Jane Rock Costanza, Susan Bowman.

Edna reported that programs for the coming guild year are in place. Karen reported that approximately 65-75% of previous members have paid dues and that an email reminder will be sent out. Catie is reviewing the hostess budget of \$30 and will let this amount stand until seeing what is required. Jane reported that the bare bones of the newsletter design are on the web site. A decision was made to group all the classified advertisements together and to intersperse the paid advertisements throughout the newsletter, rotating placement from month to month. A calendar will also be available and Jane is researching a Google feature that has pop-ups for each date, with more detail about the event. A decision was made to make a printable newsletter accessible from the web site that is the same as the mailed version. Louise reported that she will work on publicity after getting the program information from Edna. Jan reported that the early bird special for advertisers would expire on Friday August 10th and she would follow up with advertisers. Debbi gave an update on the Coverlet Project saying that photos of all the coverlets are complete and data compilation is pending. Debbi will take photos of any not selected to the September meeting. Jane will ask Maryse Levenson for an article on the CommonWheel Gallery exhibit for the September newsletter since work is submitted at the September meeting. Bev reported that prospectuses for Living with Beauty: Handwoven Textiles for the Home were sent to a number of weaving conferences nationwide and in Canada this summer, for inclusion in goody bags. Jane and Debbi discussed getting with Sandy Hutton and devising a plan to provide photography services for members that want to enter this exhibit. Susan reported that approval had been received for these awards related to the juried exhibit: Handweavers Guild of America, Surface Design Association, Complex Weavers, American Tapestry Alliance, and *Handwoven* magazine (w/\$100). Any cash awards that surface will be publicized in the Exhibit's program and no merchandise or gift certificates will be awarded. There was discussion and a decision made that Program and Workshop Chairpersons would ask for sufficient budget each year and not carry over any surplus from year to year. There was discussion and a decision made to discontinue the longstanding practice of the Workshop Chairperson not paying the workshop fee. Linda cited Article IV Section 10 from the Bylaws that states Directors shall not be entitled to compensation for their services as such. Jane made a motion that the Bylaws should stand and be adhered to specifically as they relate to organizing a workshop and/or housing the workshop leader. Karen seconded the motion and it passed unanimously. It was decided to leave the Historian's role in place and to not create a new policy related to canceling a guild meeting due to weather. There was discussion and a decision made that instead of forwarding email from retail advertisers about special sales to PPWG members, a note can be added to the web site, directing interested readers to the advertiser's own site. There was discussion and a decision made about the logistics of handling the newsletter weaving and spinning samples with the advent of an electronic newsletter. Advertisers will continue to get a mailed hardcopy newsletter with the samples. Extra copies of the newsletter won't be printed; new members will be directed to the web site. It was decided that the guild calendar would not be embedded in the newsletter, but would be on the portion of the web site accessible by non-members, so that prospective members can see when meetings and events are taking place.

The meeting was adjourned at 1:50 pm.

Submitted by Susan Bowman



## 2007 – 2008 Pikes Peak Weavers Guild Program Schedule

All programs begin immediately following the PPWG business meeting

14 Sep 2007	Navajo Weaving	Bonnie Julsen
12 Oct 2007	Shimmering Colors: The Magic of Iridescence	Bobbie Irwin
13 Oct 2007	Saturday Workshop: The Magic of Iridescence	Bobbie Irwin
09 Nov 2007	Taking Digital Photographs of Your Weavings	Jane Rock Costanza
14 Dec 2007	South of the Border Potluck What's New In Fiber & Products. Stash Sale!	Kathleen Orr
11 Jan 2008	Hill Tribe Costume from Laos, Viet Nam and China	Judi Arndt
08 Feb 2008	The Basket Scene German Style Afternoon Workshop: Colorado Tea Basket	Linda G. Lugenbill
14 Mar 2008	Twill Weave from Plain to Fancy	Betsy Blumenthal
11 Apr 2008	Guatemalan Women and Their Weaving	Carol Wilkinson Judi Arndt
09 May 2008	Celebrate! Luncheon. Opening of the Coverlet Exhibit	Debbi Holdeman

## Classified Ads

### For Sale

\$1500. 24-shaft Woolhouse table loom w/table. 23.5-inch weaving width. Overhead beater. Sectional second warp beam. Damask extension. Raddle. 1200+ Texpolv heddles. Doreen (719) 481-4303.

\$1200. 12-shaft LeClerc Nilart floor loom. 38-inch weaving width. Floor beater. New aprons and treadle strings. 1200+ metal heddles. Doreen (719) 481-4303.

\$200. Metal Navajo loom, warped for first project. 37-inches wide by 50-inches high weaving area. Video tape and book on Navajo weaving. Doreen (719) 481-4303.

\$100. LeClerc 38-inch bench with center closed storage space and two open storage spaces on either side. Doreen (719) 481-4303.

**Knitter's Kove**

**SUPPLIES & CLASSES**

**Knitting  
Crochet  
Spinning**

**Knitting Groups**  
Wed: 10 -Noon  
Sat: 3-5 pm

**Open: M,W,Th, F 10-5:30  
Tu 10-8, Sat 10-5**

**1817-F N. Union  
Colorado Springs, CO  
719.633.8008**

# PIKES PEAK WEAVERS GUILD MEMBERSHIP REGISTRATION

Please note: Membership dues shall be payable on or before June 1. To be included in the PPWG Directory, dues and forms must be received by the Membership Secretary by at the regular PPWG September meeting.

PLEASE PRINT LEGIBLY

Name \_\_\_\_\_

New \_\_\_\_\_ Renew \_\_\_\_\_ Lifetime \_\_\_\_\_

If YOU ARE A RENEWING MEMBER AND YOU WERE LISTED IN THE PREVIOUS DIRECTORY, PLEASE ENTER ONLY AMOUNTS PAID AND ANY CHANGES IN YOUR INFORMATION.

- \_\_\_\_\_ \$ 25.00 Regular membership June-May (\$12.50 new members January-June)
- \_\_\_\_\_ Lifetime Membership (grandfathered members only)
- \_\_\_\_\_ \$ 10.00 Artist Gallery Page (PPWG web site)
- \_\_\_\_\_ \$ 1.00 Directory Mailing Fee (Directory may be picked up at the October meeting)
- \_\_\_\_\_ \$ 15.00 To have newsletter mailed (Newsletters are now published electronically)
- \_\_\_\_\_ \$ Donation to the guild

\_\_\_\_\_ \$ Total

Please make check payable to PPWG.  
Send to: PPWG, P.O. Box 8104, Colorado Springs, CO 80933

E-mail \_\_\_\_\_

Address \_\_\_\_\_

City \_\_\_\_\_ State \_\_\_\_\_ Zip+4 \_\_\_\_\_ + \_\_\_\_\_

Phone: Home ( \_\_\_\_\_ ) \_\_\_\_\_ Work ( \_\_\_\_\_ ) \_\_\_\_\_

EQUIPMENT INFORMATION FOR DIRECTORY

**LOOMS**

Number shafts	Type (Jack, Countermarch, etc.)	Manufacturer

**SPINNING & OTHER FIBER EQUIPMENT**

Manufacturer	Type & Miscellaneous Information

**Deadline Oct Issue:**  
20 September 2007

**Advertising Rates:**

Business card \$10.00  
¼ page \$15.00  
½ page \$20.00  
Full page \$30.00

**Classified Ads:**

\$5.00 for 25 words  
25 cents each additional word

**Digital or electronic  
submission to:**

[PPWGuild@aol.com](mailto:PPWGuild@aol.com)

---

*We're on the Web!*

*Visit us at:*

[www.pikespeakweavers.org](http://www.pikespeakweavers.org)

---



**SHUTTLES**

**15th BIRTHDAY SALE!!**  
**Saturday, September 22nd**  
**10 am to 6 pm!!**

**SPINDLES & SKEINS**  
635 S. Broadway, Table Mesa Center  
Boulder, Colorado  
(303) 494-1071 · (800) 283-4163  
Mon Noon - 6pm    Tue - Sat 10am - 6pm

PPWG  
PO Box 8104  
CO Springs, CO 80933-8104

