

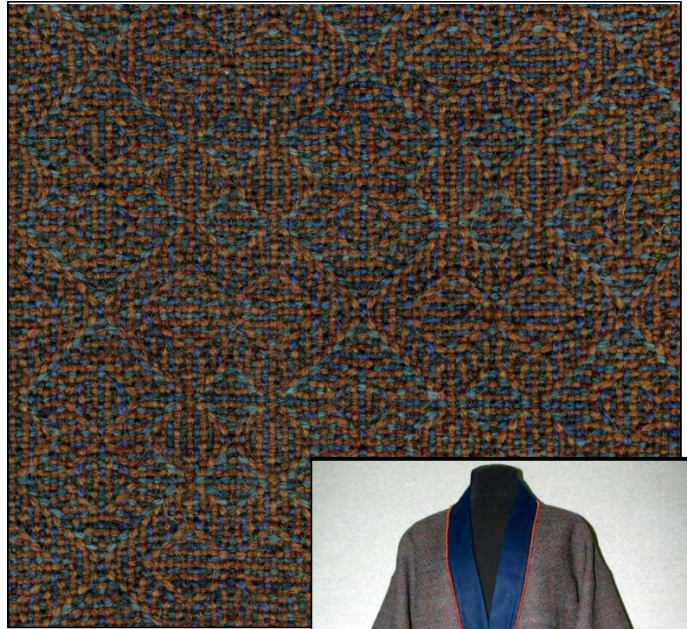
October Sample by Jan Seltman

Weaving Sample:

Recently I was faced with study projects for two different groups that gave me the opportunity to combine them into one project: Shadow Weave for one, and “Brown and Blue, and New to You” for the other. As I have not woven anything in Shadow Weave before because I don’t like the busy look of highly contracted yarns, I decided to make it in minimally contrasting shades of browns and blues.

In my stash I had a lot of lightly colored wool, which I overdyed in various shades of blue: an Indigo Blue, Jade Blue, Cobalt Blue, Medium Blue and a highly variegated denim blue. The weft was the Indigo Blue and Redwood (a rusty brown); and the weft was two shades of blue, one Medium Blue and one Cobalt Blue. The plan was for two jackets and one vest from the thirteen yarns I put on the loom. The second jacket fabric was woven with only the lighter denim yarn, and the vest was woven with the jade.

When I started weaving, I immediately found out that the sequence in which the colors were used in the weft made a distinct difference in the appearance of the cloth. I found that I preferred the look of the cloth when the darker thread was used first.



Following are the project details. The cost information would not be accurate if you were purchasing all new yarns; some of my stash yarns were from guild sales and other discounted sources.

default Sett: 15 ends per inch
 default PPI: 15 picks per inch
 Warp Shrinkage: 15% Weft Shrinkage/Draw-in 15% Waste: 27 inches
 Number of Items: 1
 Loom Width: 31.5 inches Finished Width: 26.75 inches
 Loom Length: 13 yards Finished Length: 374 inches

Heddle Count
 1=(54) 2=(53) 3=(64) 4=(64)
 5=(64) 6=(64) 7=(64) 8=(44)

Project Yarns:	Yardage Requirements / Cost									
			Warp				Weft			
			(ends	yards	amt	cost)	(picks	yards	amt	cost)
B	Indigo	2/8 Wool	236	3068	1.4 lb	\$36.30				
				Jagerspun/Hand Dyed Aqua-Teal						
A	Redwood	2/8 Wool	235	3055	1.4 lb	\$36.14				
				Jagerspun						
C	Cobalt	2/8 Wool					3300	2888	1.4 lb	\$38.27
				Jagerspun/Hand dyed Teal Multi						
D	Med Blue	2/8 Wool					3300	2888	1.4 lb	\$38.27
				Jagerspun - Overdyed						

Total Warp Ends: 471
 Total Weft Ends: 6600
 Total Cost: \$148.97

