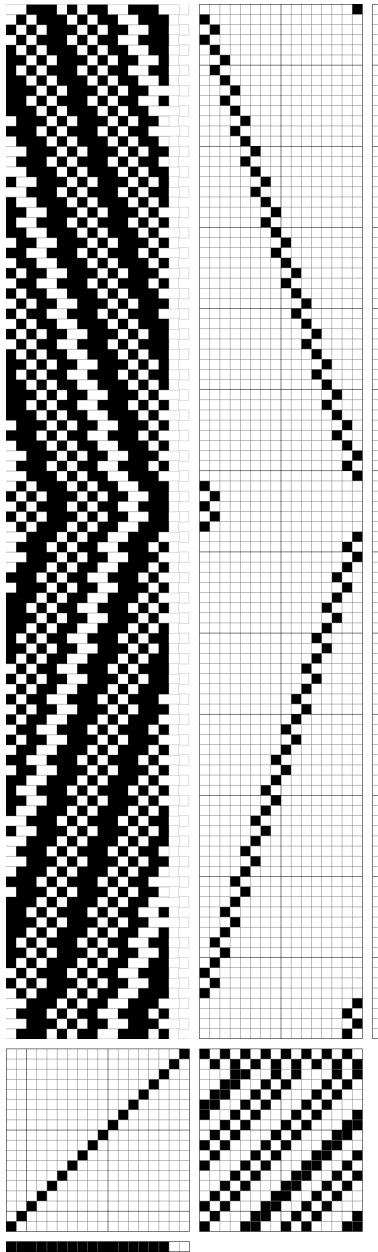


October Weaving Sample

By Doreen McLaughlin



The More Than 4 study group is finishing up their study of woven shibori. My sample was woven using unmarked mill-end yarn (my guess is 16/2 cotton) for the warp and plain weave weft, and Sears #30 crochet cotton for the pattern weft. The sett was 32epi, sleyed two to a dent in a 16dpi reed, woven on my 16-shaft AVL CompuDobby. The number of plain weave picks between pattern weft is up to the weaver. I used 8 picks of plain weave (not shown) between pattern picks. The pattern picks were single shots, with 3 inches of weft left “hanging out” on each side of the web. I put on 12 yards of warp and wove 4 scarves 72 inches long and a sample piece.

After weaving, I pulled the pattern warp strings to pleat the fabric, knotting 3 strings together once the fabric was scrunched.

Judy Arndt sponsored a vat dyeing day at her home on Sep. 19th. I dyed the scarves blue, red, yellow/green, and yellow/red. The scarves dried over the weekend and on Sunday night I cut the knots and pulled out the pattern weft.

