

May Weaving Sample by Sandy Hutton

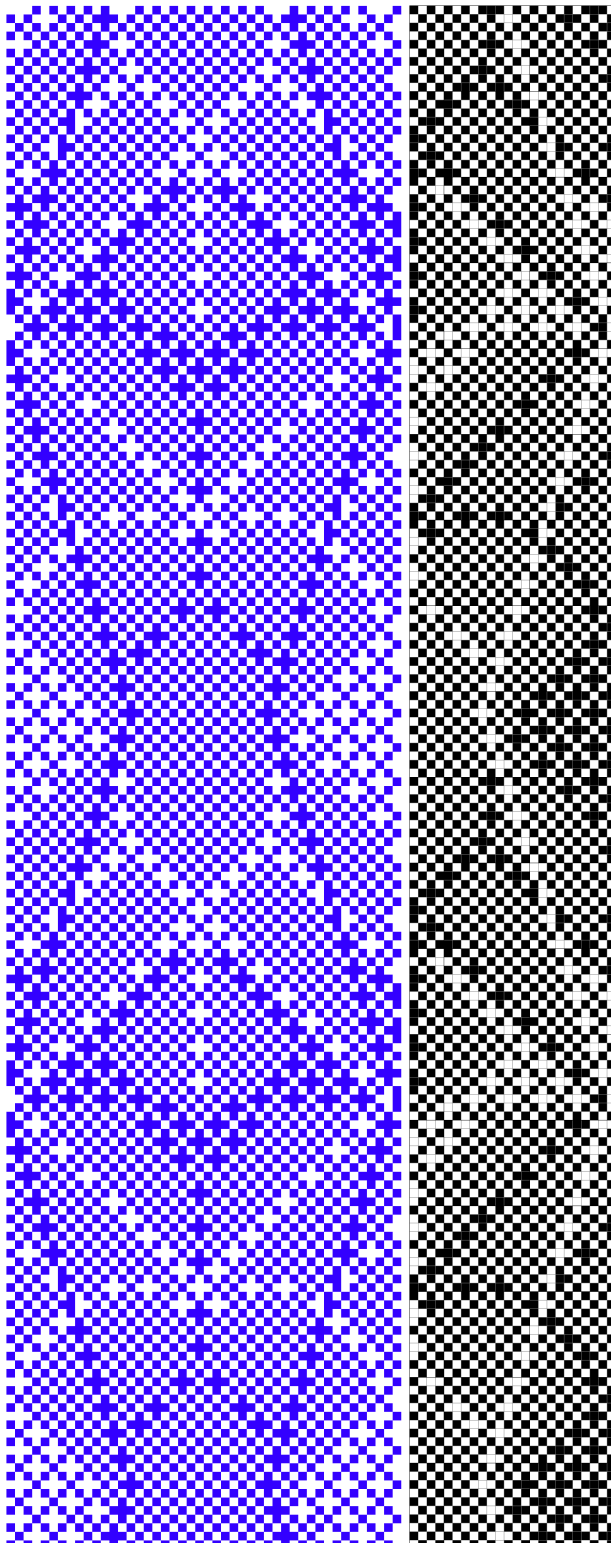
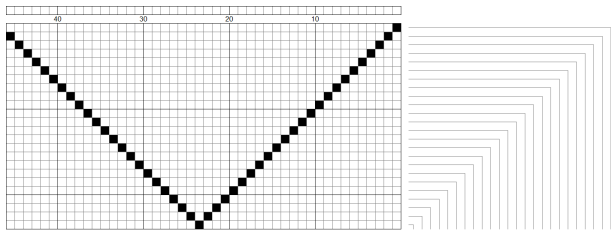
Swedish Lace

Warp: 10/2 UKI mercerized cotton, purple

Weft: 10/2 UKI mercerized cotton, light purple

Reed: 12 dpi Sett: 24 epi Sley: 2 ends per dent

Ends per repeat: 47



The design for this month's sample was emailed to me by Laurie Autio of Pelham, Massachusetts and woven by me (with permission). One of Laurie's passions is lace weaves and she is particularly interested in and accomplished with Swedish lace designs.

Lace groups and units can employ a variety of numbers of ends and picks. For example, huck lace can have floats over three, five, seven or more threads. The length of the floats in lace weaves is governed by yarn size, use of the textile, etc. This design has floats which span three ends and three picks.

Swedish lace combines huck and lace Bronson allowing the weaver to capitalize on the advantages and eliminate the disadvantages of both structures. Donna Muller studied lace weaves as her Level II topic for the Certificate of Excellence awarded by the Handweavers Guild of America. On page 136 of her book, Muller states, "Threading groups can repeat and combine (a feature of lace Bronson) and blocks can turn (a feature of huck lace)." Laurie makes ample use of these features in this design.

The sample was woven on a 24 shaft AVL workshop doobby loom. It would require 54 treadles to weave on a treadle loom.

The sample was machine washed and dried and then steam pressed. Shrinkage was 6% in length and 8% in width.

For further information on lace weaves, including Swedish lace, see the original publication or reprint of: Muller, Donna. *Handwoven Laces*. Loveland, CO: Interweave Press. 1991.