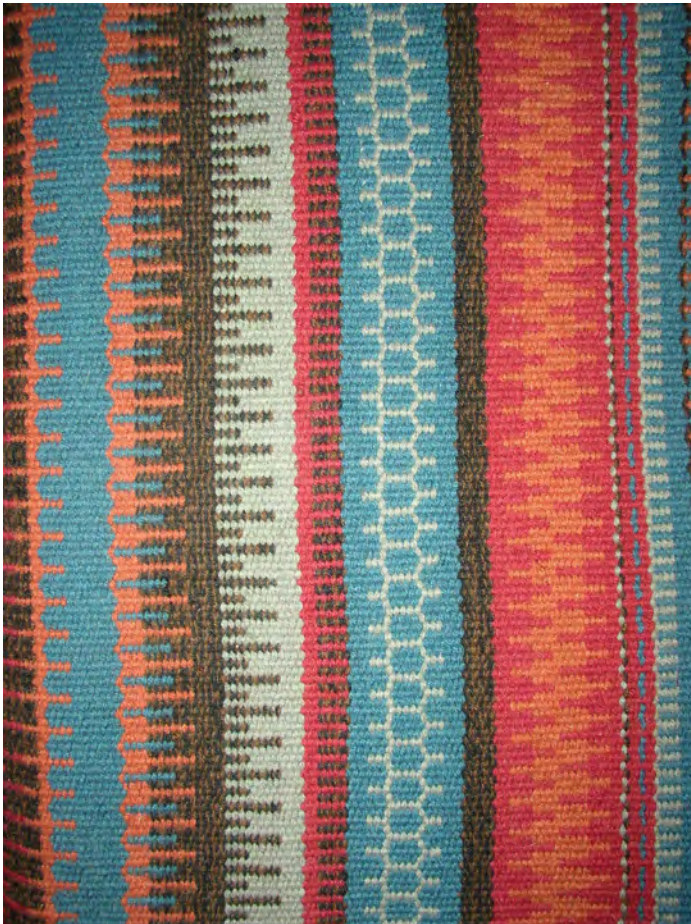


May Program

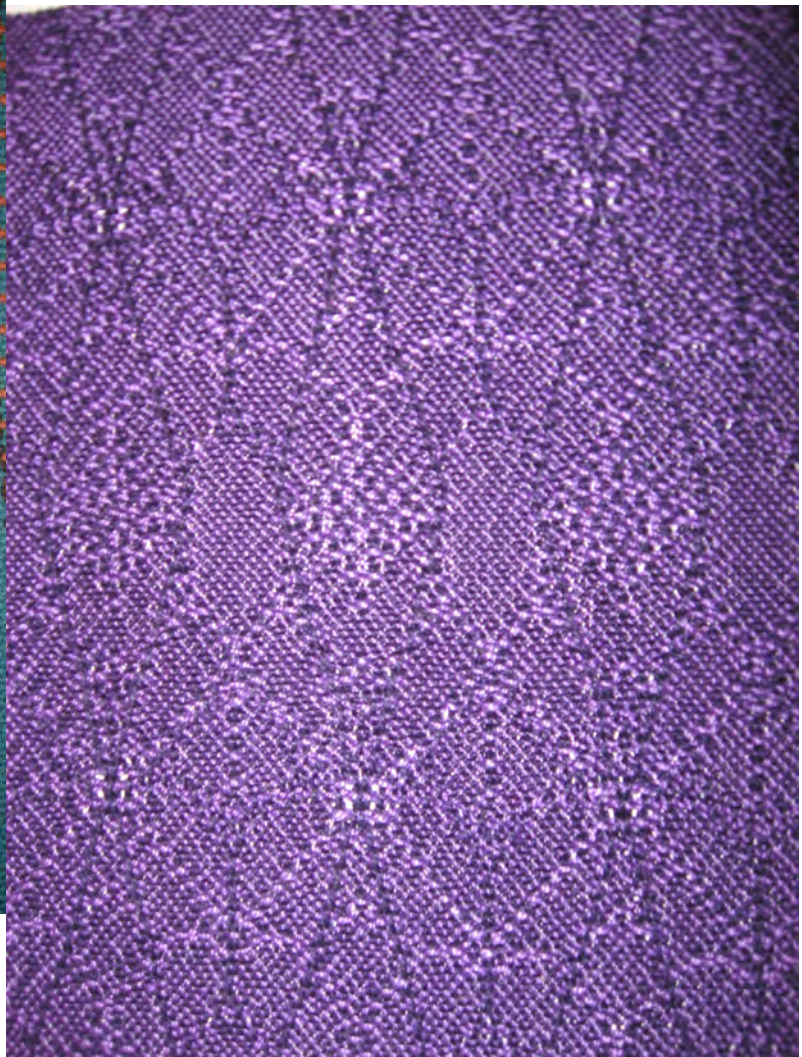
The Basics of Weft-Faced Rug Weaving by Sally Kuhn

Weaving a well-woven, wool, weft-faced rug is a time consuming, often nit-picky process, but the results can be spectacular. All rugs are a compilation of choices – beginning with the warp and weft yarn choices and ending with the off loom finishing techniques. There are specific ways to start the rug correctly, and to get a great selvedge. And some looms are better than others are for rugs. . . but with modifications, a lightweight loom can weave a rug occasionally. Sally Kuhn will talk about all of these and more.

Sally Kuhn has been weaving since the early 90s, learning from Rosmarie Amstein, Judy Steinkoenig and Carol Seeds, with rug workshops from Jason Collingwood, Mary Zicafoose, James Koehler and Louise Bradley. She began working at Shuttles, Spindles & Skeins in Boulder in 2001 and started teaching the weft faced rug class there in 2004. She also taught a one-day class at Estes Park Wool Market in 2007.



Above: Krokbragd rug by Sally Kuhn.



Right: 3 end, 3 pick Swedish Lace sample by Sandy Hutton.