

March Weaving Sample

7 Shaft, Straight Draw, Color and Weave

By: Susan Bowman

This sample is a 7 shaft, two shuttle color and weave pattern that results in a 45° angle of the twill.

The pattern is from a sample in my library that was woven by the late Jeanne Young Kudlicki, a friend, weaving mentor, and member of the Denton Handweavers Guild (Texas). The sample from Jeanne was woven at 10 epi, alternating black wool and a silk novelty tweed to create a striking fabric with bold geometric “steps”. I chose yarns that were finer and closer in value, with one being a handpainted yarn that has color variegations throughout.

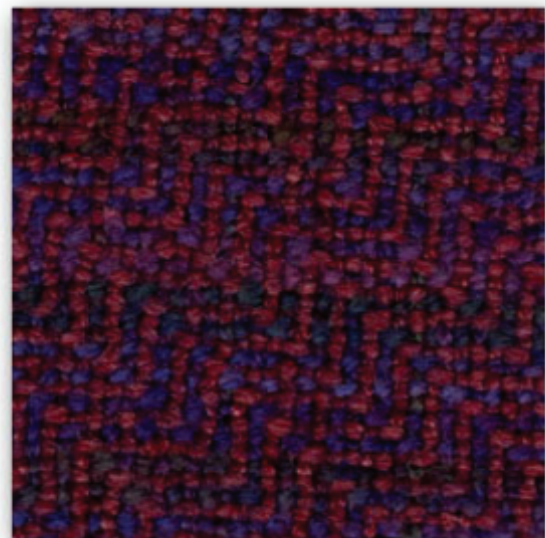
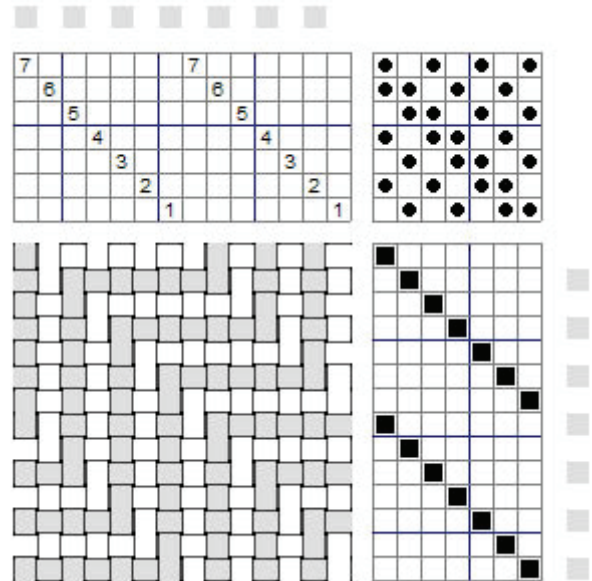
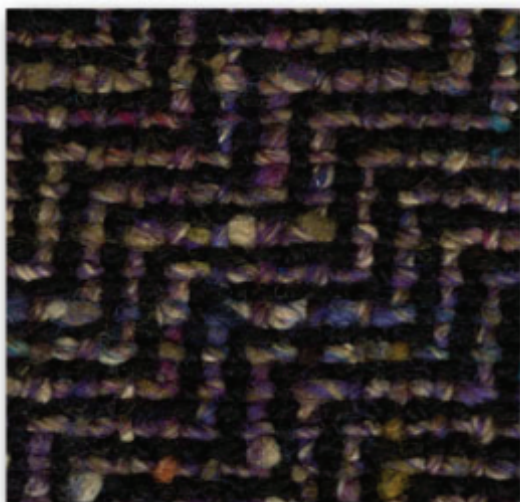
For both the warp and weft these 2 yarns were alternated:

- Handpainted Superfine Merino from Spruce Dragon, LLC, Color is Northern Lights, approximately 300 yards/oz.
- Jagger Spun Zephyr, color is Raspberry, approximately 300 yards/oz.

The sett is 20 epi, 2/dent in a 10 dent reed.

The samples and two scarves that were woven from the warp were finished by washing in warm water and mild detergent then ironing while still slightly damp.

Below is a sample from my inspiration fabric.



Special thanks to Sandra Hutton for scanning the monthly samples for the newsletter.