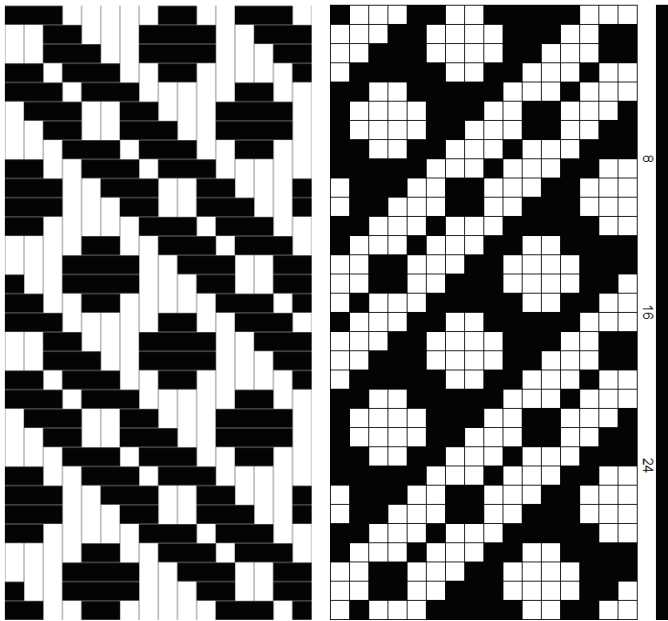
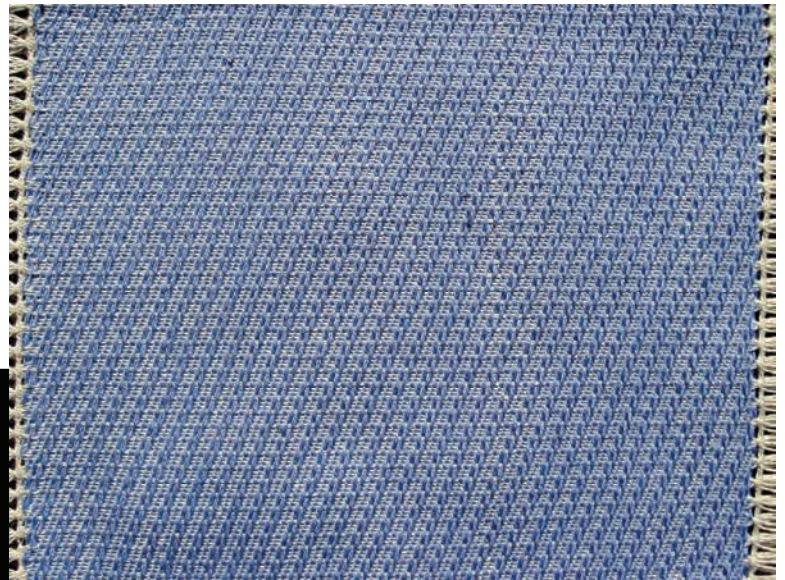
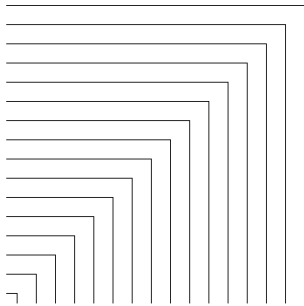
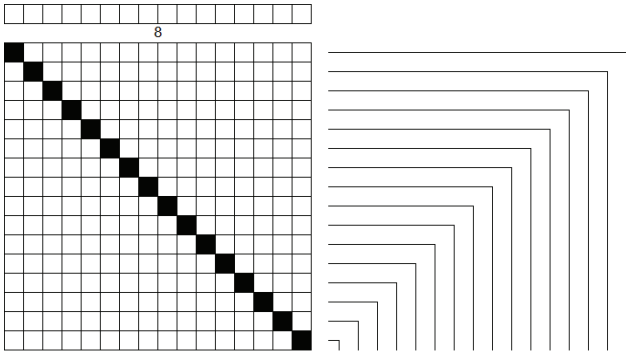


June Weaving Sample by Doreen McLaughlin



This is the story of a failure. Since I had failed to get the warp from the Melissa Weaver Dunning workshop off the loom, and I needed a sample for the newsletter, I decided to find a draft that would have a straight draw threading and be easy to see. Looking at the photo above, it is clear that I failed the last criteria. I forgot to envision what the draft would look like with 20/2 unmerc. cotton in the warp and weft, sett at 30 epi. Sigh!

JUNE SPINNING SAMPLE BY CHRIS RACE

The daily routine in my packing and shipping business is filled with precision – measuring items for packaging and boxes for shipping, choosing the most cost-effective shipper for customers, sorting the mail for mailbox holders, preparing inventories before shipping estates, and providing quotes. Checklists are the rule.

Working with fibers – especially spinning – allows my creativity to flow with “a little of this” and “a little of that,” going by sight and touch. Checklists are out the window. If I have enough spun yarn for a single project – great! If not, I spin a complementary yarn and adjust the project to fit. I thoroughly enjoy the spinning rhythm and get lost in it for hours on end. I hope the following accounting of my spinning sample makes sense. Enjoy! (*Continued on next page.*)

Tools

Louet drum carder

Whitehorse Mountain Woodworks upright spinning wheel (limited by one bobbin)

Navajo spindle

Fibers (total 4.4 oz)

1.6 oz wool – white

1.6 oz tussah silk – cream

.6 oz wool – red

.6 oz wool – purple