

# Treasurer's Report by Sandy Hutton

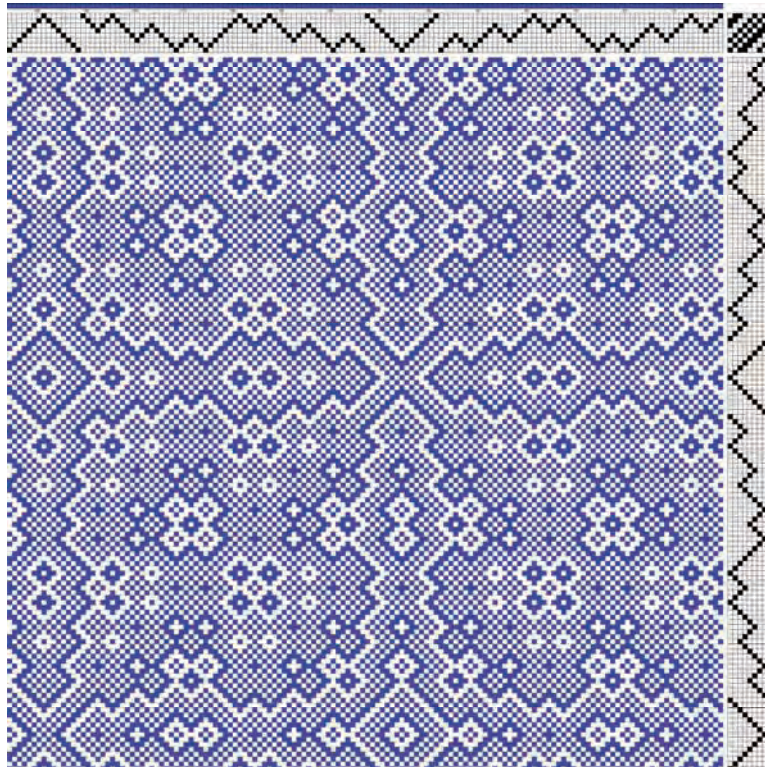
## Treasurer's Report November 1-30, 2011

Checking Account Balance Forward 11/1/2011-----		\$10,847.24
Operating Monies    9,500.05		
Income less Expense	-527.69	
	+ dedicated monies    +54.00	9,026.36
Dedicated Monies		
409 Library	473.47 – 50.00 =	423.37
432 Demonstrations	511.32 – 4.00 =	507.32
425 Gifts for Awards	362.50	1,293.19
Checking Account Closing Balance 11/30/2011-----		\$10,319.55
Restricted Funds:		
PPWG Savings Acct. Fund for Excellence in Fiber Arts 11/30/2011		\$4,910.23
PPWG Savings Acct. Memorial Fund 11/30/2011		\$4,344.90
Total Funds (Checking plus two savings accounts)		\$19,574.68

## Drafts from Handweaving.net by Doreen McLaughlin

The title of this draft is "Threading Draft from Divisional Profile: Tieup: Crackle Design Project, Draft #13534, Threading: Weber Kunst und Bild Buch, Marx Ziegler, (1677) # 22, Treading: Weber Kunst und Bild Buch, Marx Ziegler...Draft #63044."

The draft was submitted to the website <http://www.handweaving.net> recently\*. As with all data found online or in print, it is only a starting point. First, do you agree with the person who submitted it that this draft is indeed eight shaft crackle woven twill style? Second, would adding a thin tabby weft enhance or detract from the woven cloth? And what color would work best as the tabby (the warp color, the pattern weft color, or a third color)? Do you have the additional two treadles? Third, you will need to determine what the



cloth will eventually be used for and after that decide on the yarn and the sett. \*handweaving.net allows newsletters to publish material presented on the website if proper recognition of handweaving.net as the source of the material is given. Thank you handweaving.net owners!