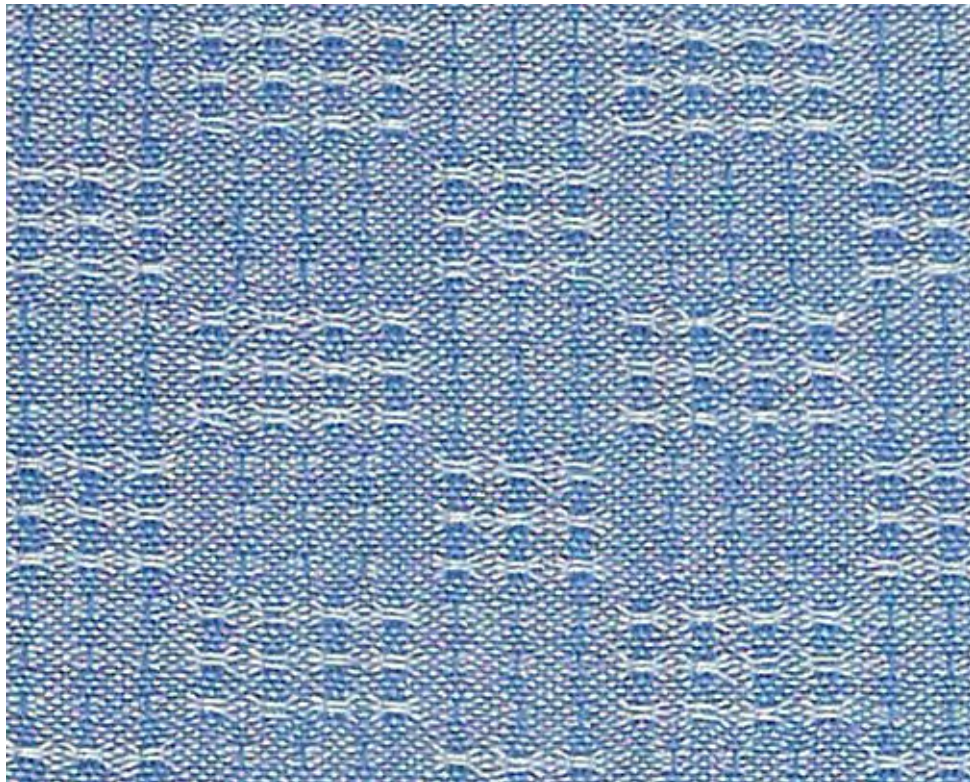


# January Weaving Sample by Tina Broderson



Rescue of a failed experiment...

Warp: mill end, probably 16/2 mercerized cotton, blue

EPI: 24

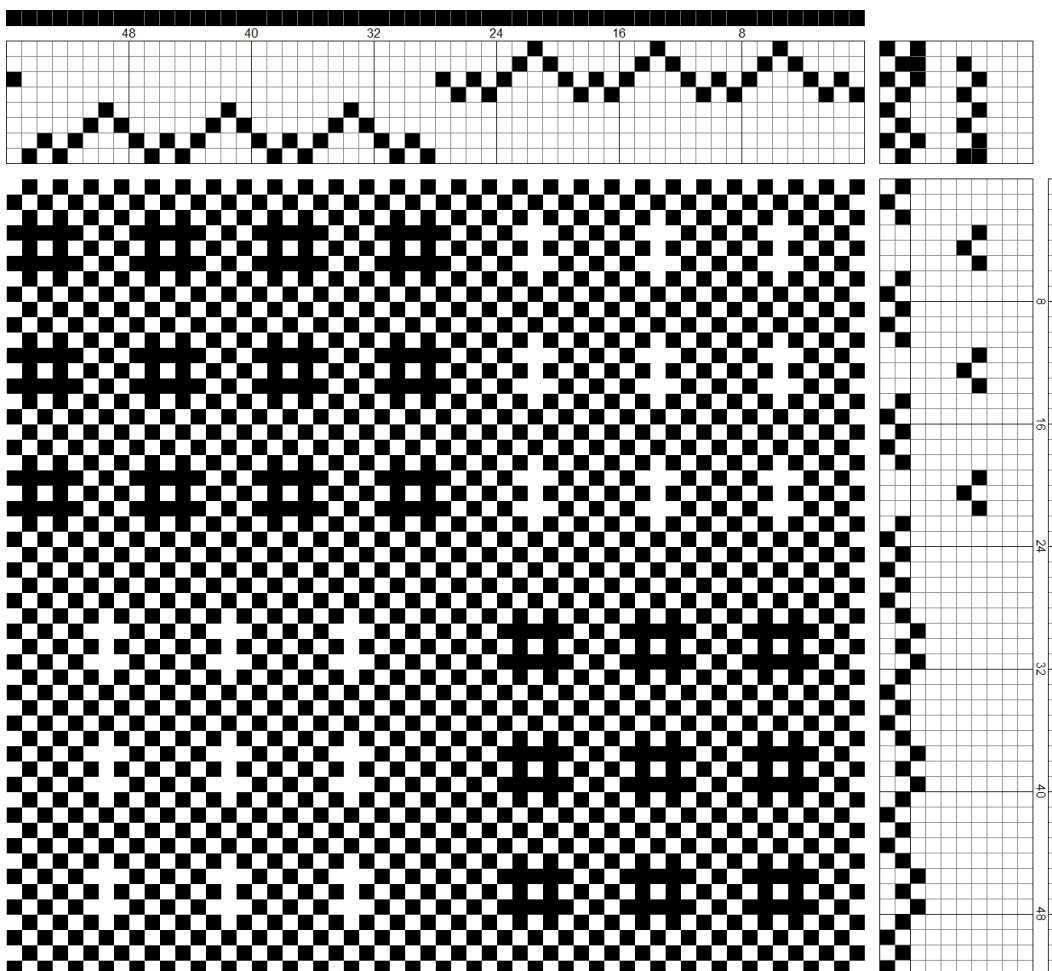
Weft: mill end, 20/2 mercerized cotton, white

PPI: 24

Finishing: Machine washed, warm water on hand wash cycle, machine dried to damp-dry, pressed until dry.

Comments:

I warped the loom with a particular lacy structure (a myggjtall variation) in mind, just to try and see if it worked. Alas, it didn't—there was all-over



laciousness but not the pattern I hoped for. I then tried to find a treadling and tie-up that would make an acceptable cloth of any kind, using the existing threading. After I rejected many drafts, I tried weaving a couple of possibilities. Heartily sick of the warp before I wove a foot of it, I finally settled on a plaid composed of a mystery spot weave, woven using an unlikely threading, a limited tie up, and a simplified treadling. I'm sure there are easier ways to arrive at this structure! I'm not sure what it's good for, but I'm open to suggestions.