

February Weaving Sample

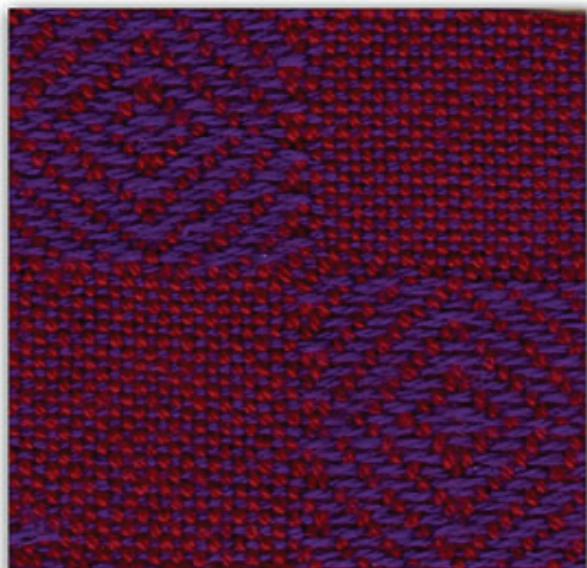
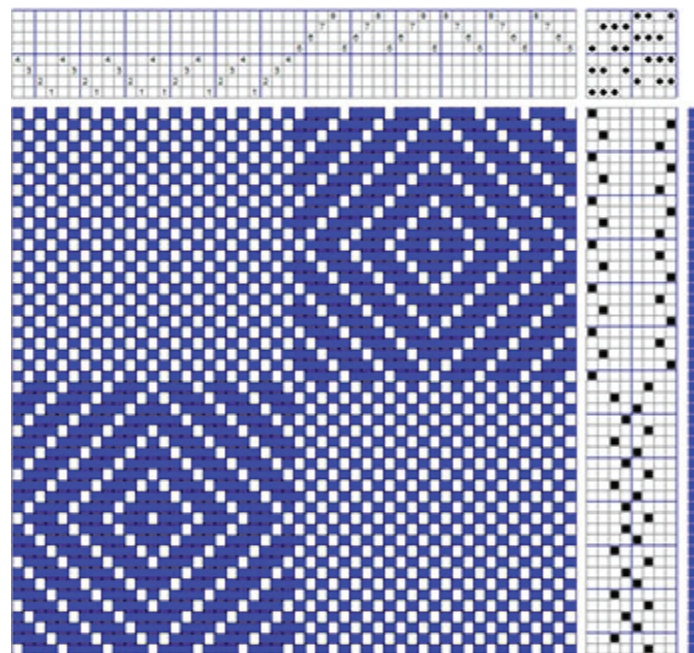
Goose Eye Twill

By: Sandra Hutton

This eight shaft fabric has two blocks which alternate: plain weave and goose eye twill. The yarn size is 16/2 unmercerized cotton with one color in the warp and a different color in the weft. I put about nine meters of warp on the Baby Wolf which allowed for nine tea towels and some sampling. I used six different weft colors so each fabric was a little different in color interactions. The treadling was rearranged from a block arrangement to one which allowed me to walk the treadles.

During the sampling, I discovered that the sett was just a little tight making the blocks slightly elongated. I'm not going to repeat the familiar phrase that I wanted it that way. In honesty, I was just too lazy to fool around with the sett at that time. Usually, I spend the time to get good right angles in the weave structure.

I have used the 16/2 unmercerized cotton in tied overshot and in double weave. In both of those structures, the fabric did not wrinkle to any extent. In this case, I think the fabric is a little thin and it does wrinkle during washing and drying. This sample has been machine washed and dried and then pressed with steam.



Special thanks to Sandra Hutton for scanning the monthly samples for the newsletter.