

# December Weaving Sample

## Two Slices of Twill on a Bed of Plain Weave

By: *Dottie Weir*

A few months ago, I was looking for a weaving pattern for our *Color and Design* project: *Not Divisible by Four*.

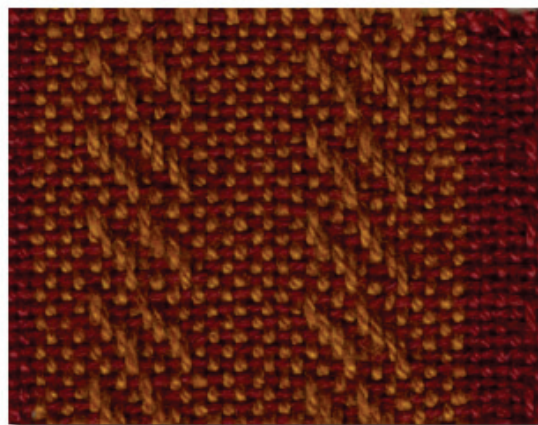
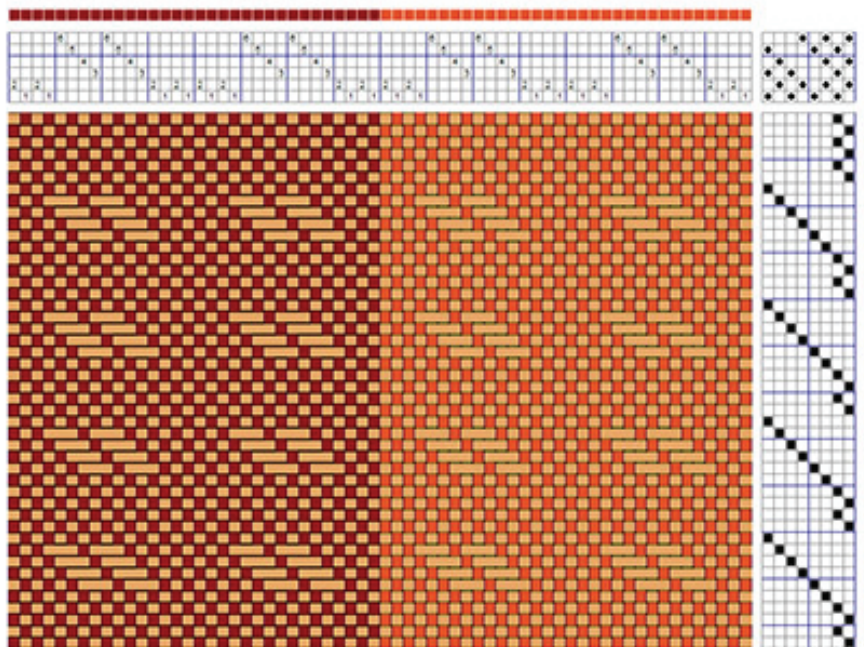
What a fun weave this was - easy - fast - and only on 6 harnesses. During the time I had this warp on the loom, I was introduced to hand painting fabric strips. So, this weave set up was perfect for weaving with the fabric strips. Twenty-four yards later, I decided to thread and weave something different.

I finished the samples by washing and drying in the machine.

Warp: 22/2 Cottolin, 20 epi, 2 per dent, 16 inches wide (320 ends)

Weft: 22/2 Cottolin, approximately 15 ppi

Repeat threading of 16 ends for 20 times, alternating colors.



Fabric was used for towels and the warp was also used for a table runner with fabric strips for the weft

*Special thanks to Sandra Hutton for scanning the monthly samples for the newsletter.*