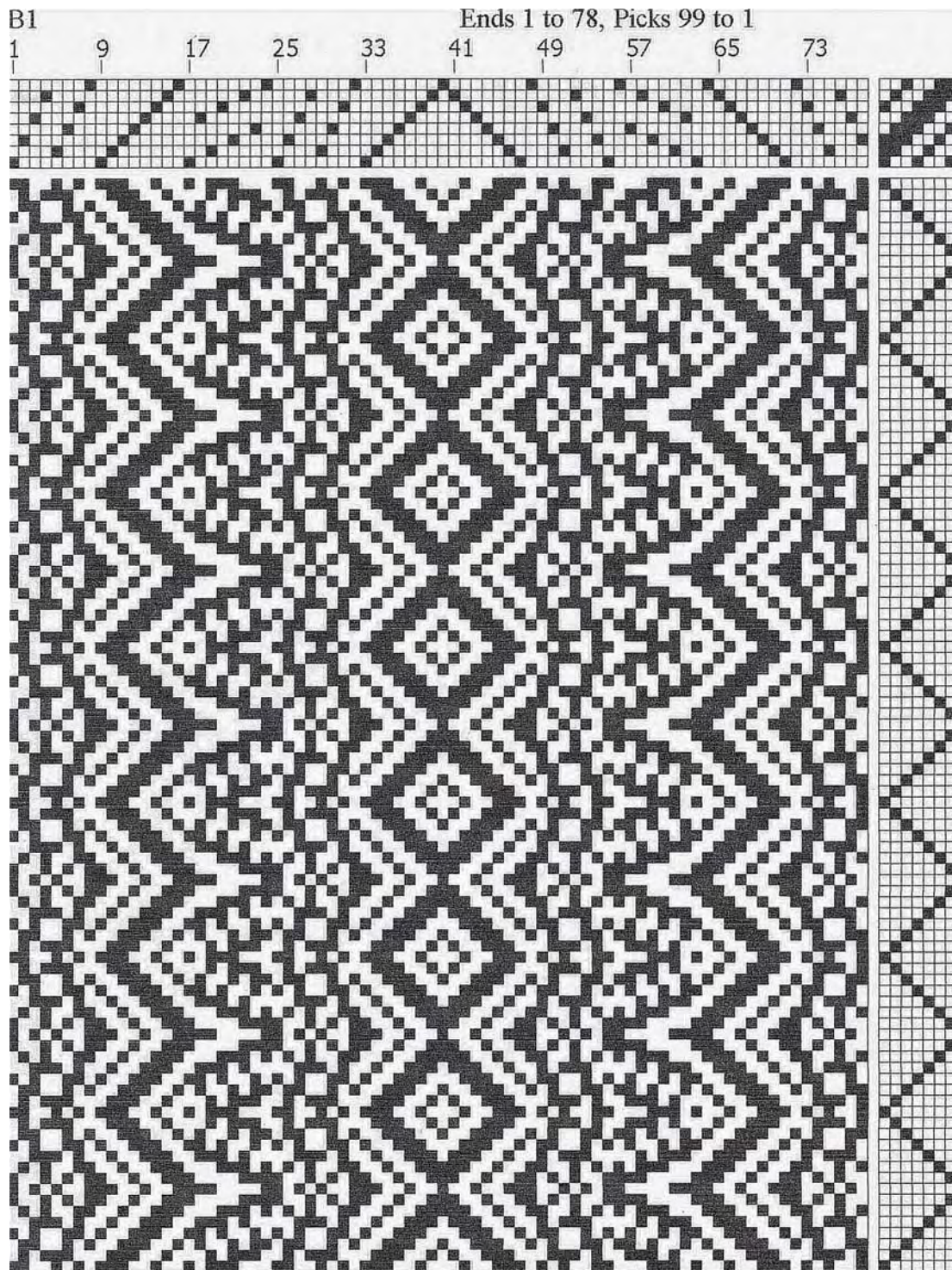


# April Weaving Sample by Carol Wilkinson



This sample resulted from a towel I wove for a friend whose kitchen colors were sort of Southwestern. So I tried to find yarns in my stash to accommodate that color scheme. The warp contains various 8/2 unmercerized cotton yarns. The weft is 16/2 bleached ivory line flax from Henry's Attic. The weft yarn for the hems is 10/2 mercerized cotton. Being 50% linen, the towel is very absorbent.

The pattern is Rosepath in Multiple Tabby Weave found in Strickler's 8-Shaft Patterns book, #728 on page 228. Sett: 24 epi; 12 dent reed, sleyed double Width on loom: 22.5 inches Finishing: Machine washed hot and dried on a hot cycle. Shrinkage: 13% in width and about 16.5% in length.

Multiple Tabby Weave is a weave system of several threading blocks each of which has its own tabby. There is no "true" tabby or plain weave in this pattern.



Left: Close up of the towel.

Right: the towel that has been donated to the Library raffle by Carol Wilkinson.

