

Fun With Four Color Doubleweave

By Edna Devai



Structure: 4 Color Doubleweave
on 4 Shafts

Warp: 20/2 mercerized cotton
Alternate colors:
Color A: Deep red
Color B: Light yellow

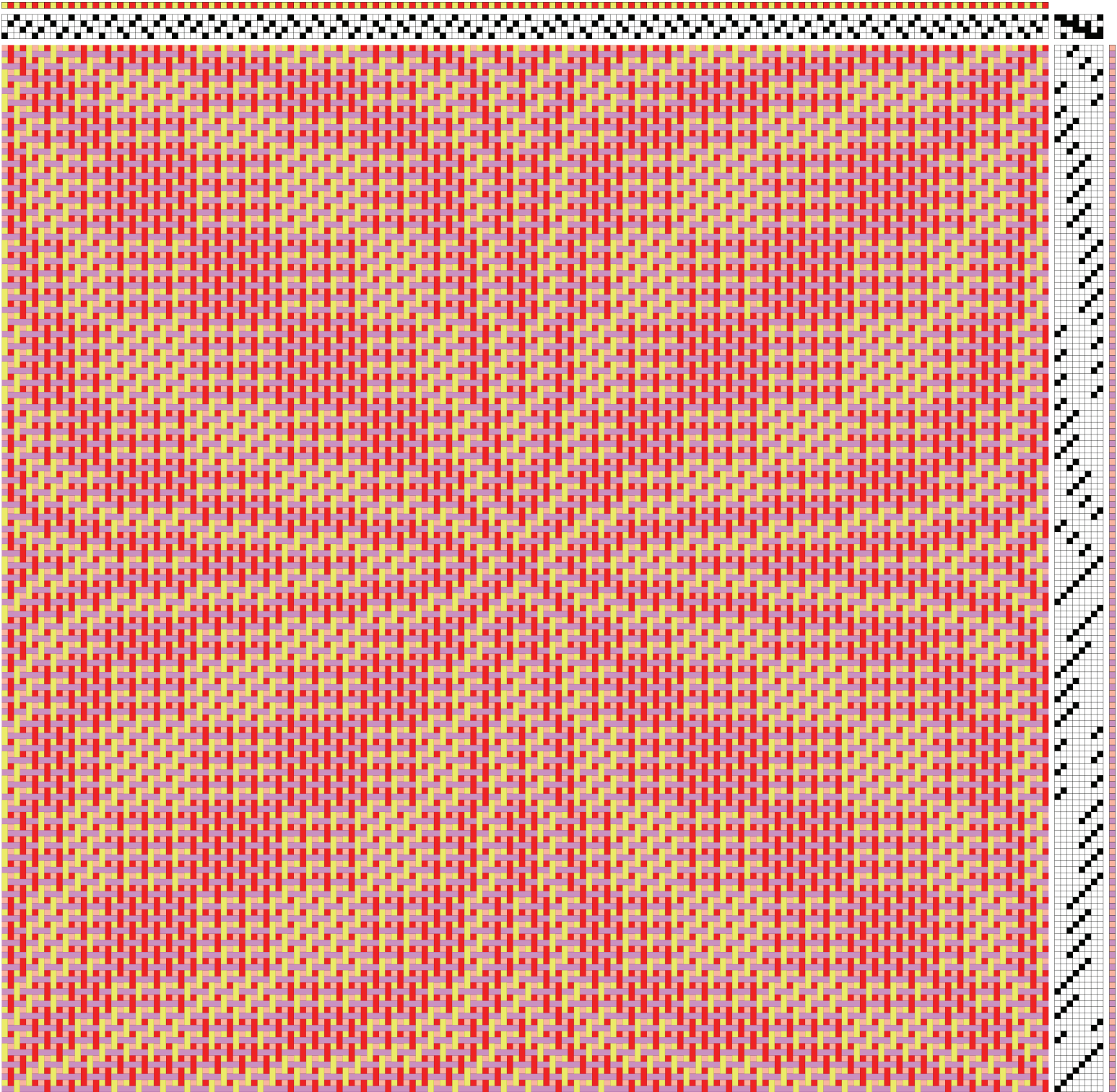
Weft: 20/2 mercerized cotton
Alternate colors:
Color C: Light purple
Color D: Light pink-orange

15 dent reed, 4 ends per dent
Warp sett: 60 ends per inch
Width in reed: 12"

Dimensions after hemming and
wet finishing: 10.75" x 18.5"

The initial design for this towel came from Marguerite Davison's *A Handweavers Pattern Book*, Blooming Leaves, p. 133. I translated this into a 4 shaft, 4 color doubleweave pattern. The two warp colors weave on both sides, but only one weft color weaves on the front, with the other color on the back. With double treading you can weave this on a 4 shaft direct tie-up loom. Make sure you have enough heddles for each shaft.

To create a closed selvage, start your shuttles on the same side. Put the top weft color shuttle close to you and the bottom color above it. Finish hems by turning them inside against each other. A long warp allows for multiple color plans with your weft; have fun designing these new blends of color!



The repeat in the main body of the towel is shown above without selvage threads and woven borders. If 8 shafts are available, the warp can be spread out to make treading easier.

To see entire draft, 8 treadle version:

[Click Here for WIF](#)

To see entire draft, 4 treadle version:

[Click Here for WIF](#)